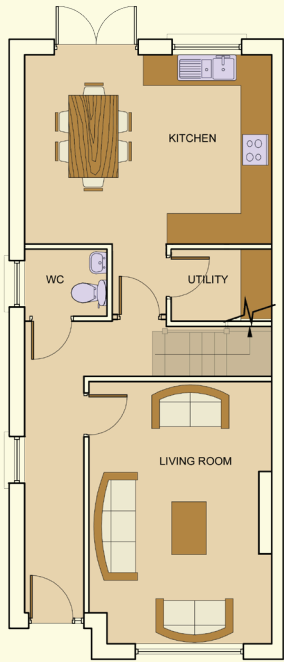
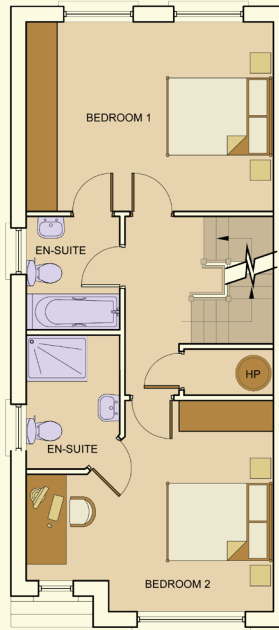


# House Type M

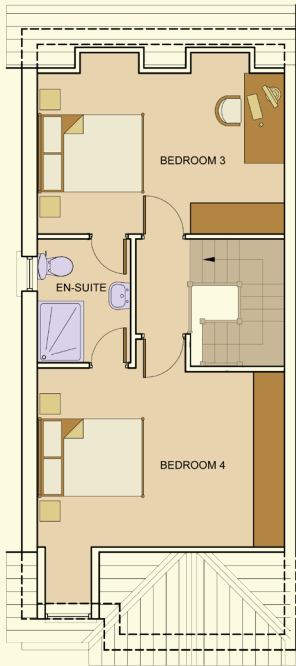
c.1,660 Square Feet  
4 Bedroom



Ground Floor



First Floor



Second Floor

Approximate Internal Layout



- Choice of High Quality Luxury Kitchens.
- Granite Worktops and Splashbacks.
- Generous Tiling in Bathrooms.
- Feature Natural Gas Fire.
- High Efficiency Gas Boilers.
- Environmentally Friendly B Energy Rating.
- Solar Panels Fitted to Heat Domestic Water.
- Feature 9ft. ceilings.
- Centralised Vacuum System.
- Heated Towel Rails.

# PEYTON

STONEY LANE, RATHCOOLE, CO. DUBLIN.