



First Floor Offices

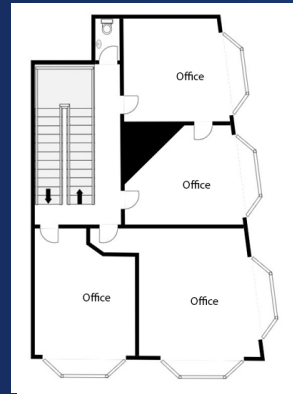
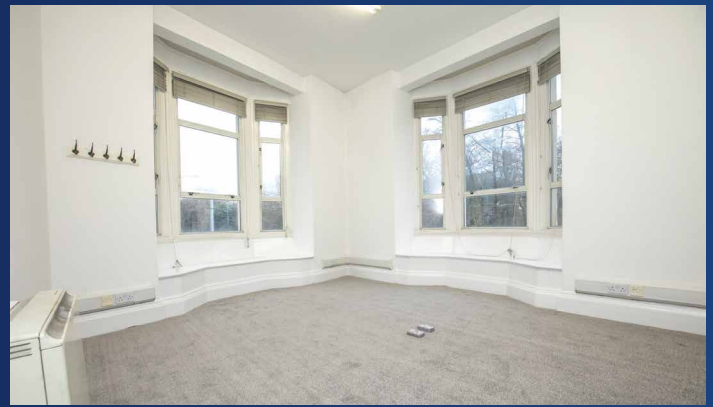
13 St. Stephen's Green,
Dublin 2



Spacious offices in high profile location
c. 68.7sq.m. / 740sq.ft.



FINNEGAN
Menton



Location:

The office accommodation at 13 St. Stephen's Green is positioned at the junction of Dawson Street and St. Stephen's Green just c.20 metres from the top of Ireland's premier shopping street known as Grafton Street. The Central location of this office space would be ideal for a business looking for a high profile address within the heart of the commercial business hub of Dublin 2 with a superb selection of amenities and many restaurants literally on the doorstep.

The property is located next to the Luas Green line terminal stop at St. Stephen's Green which is situated across from the building, together with bus servicing all major routes from this location.

Description:

13 St. Stephen's Green is an iconic building positioned on the north side of the Green. The offices are situated on the First Floor of the building with 4 separate rooms providing bright and spacious accommodation as open plan space. The offices also have the advantage of being interconnected with a nice outlook onto St. Stephen's Green.

Accommodation:

	Sq.m.	Sq.ft.
First Floor Offices	68.7	740

Rent:

On Application.

BER:

Exempt. (Protected Structure)

Lease:

New lease term.

Viewing:

By appointment only with sole agents Finnegan Menton
Contact David Rowe or Nicholas Corson on 01 614 7900



17 Merrion Row, Dublin 2, Ireland | T + 353 (0) 1 614 7900 | WWW.FINNEGANMENTON.IE | Licence Number 001954